

Don Mullally Trail Guide

by Hike-LosAngeles.com

DISTANCE: 2 Miles Roundtrip

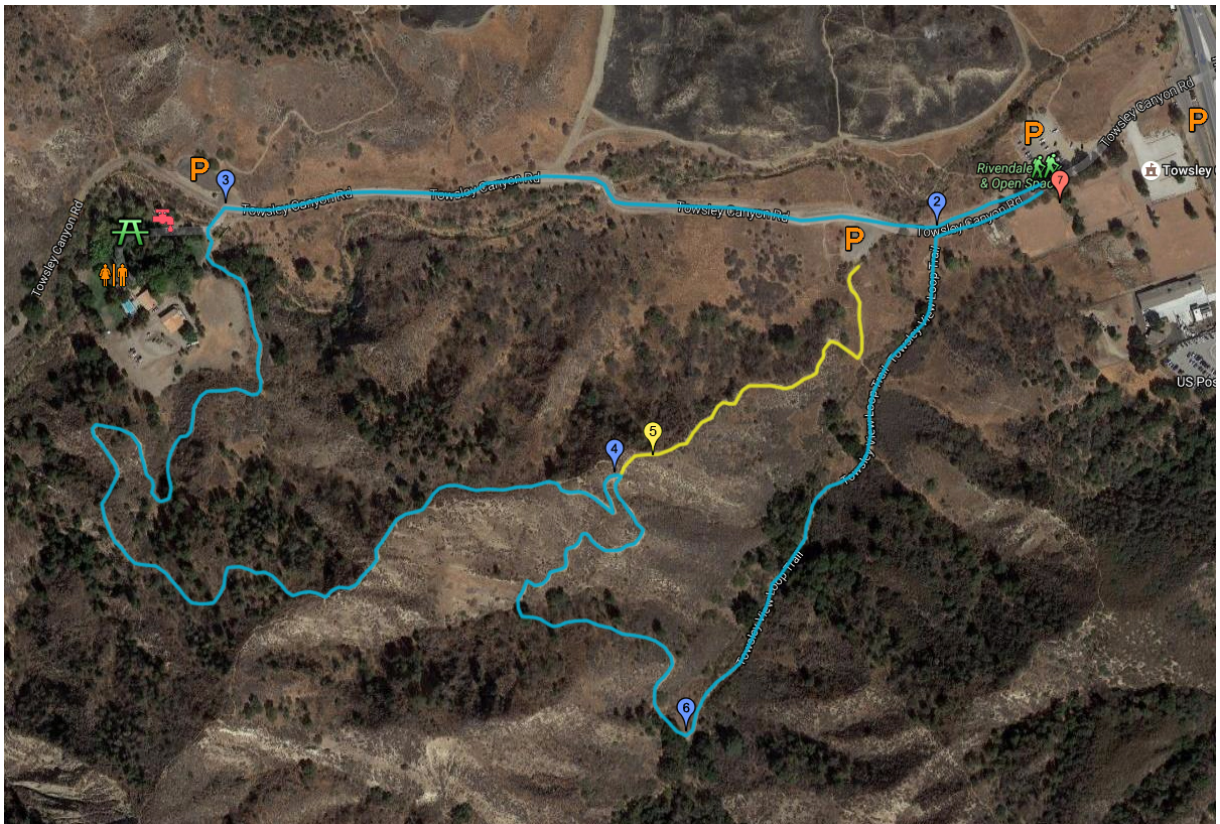
ELEVATION: 1800'

ELEVATION GAIN: 420'

TYPE: Loop

HIKING TIME: 1 Hour

RATING: Mostly easy, but with a several mildly moderate hills



Directions to Trailhead

Ed Davis Park

24335 The Old Road

Newhall, CA 91321

(Note: Google Maps places this address about two blocks south of the park entrance.)

Trailhead Coordinates: 34.358515, -118.555349

Head north on the 5 and cross over the Newhall Pass past Sylmar. As you come out of the pass and into Santa Clarita, take Exit 166. At the bottom of the exit, turn left onto Calgrove Road. As you pass under the 5, Calgrove will become The Old Road. The entrance to the park will be just ahead on your right. It's not marked well and is not much of an entrance, so keep your eyes peeled. From the exit on the 5, it's only about .33 miles to the park entrance.

Trail Guide Locators



Parking

You have several parking options. Along the frontage road and just inside the park are free parking areas. If you drive past the information sign, there is a \$7.00 parking fee. This guide assumes you will park in the free areas, and the trailhead begins at the first information sign.



Trailhead

The trail begins at the information sign at the second free parking area. This hike is actually composed of three sections: Towsley Canyon Road, the Don Mullally Trail and the Towsley View Loop Trail. Continue on the paved road (Towsley Canyon Road) for .1 mile to Trail Junction 1.



Trail Junction 1: Towsley View Loop Trail

At .1 mile, you reach Trail Junction 1 and Towsley View Loop Trail coming in on your left. You will end your hike by coming down this trail. For now, continue on the paved Towsley Canyon Road for .43 miles. In about .05 mile, you will pass the first fee parking area and the trailhead for the shortcut trail on your left.



Trail Junction 2: Don Mullaly Trail

At .53 miles, you will reach the second fee parking lot and picnic area. Turn left and cross the wooden footbridge and follow the signs for the Don Mullally Trail leading up and to your left. Continue .85 miles on the Don Mullally Trail to the next trail Junction.



Picnic Area

A grassy, shaded picnic area with restrooms, water and a nature center.



Water Fountain

A water fountain is located in the picnic area.



Rest Rooms

Rest rooms are located in the small building adjacent to the nature center.



Trail Junction 3: The Shortcut Trail

As you begin a sharp hairpin descent to the right, there is a steep trail descending to the left. This is a very steep shortcut trail back to the parking area. Turn left for the shortcut or continue down and to your right for .33 miles to the next trail junction.



The Shortcut Trail

This short .25 mile trail will save you about .33 mile and avoid the lower canyon hike that doesn't a lot of visual scenery. Be warned though, it is a very steep section that is a thigh burner going up and knee breaker coming down. But if you want to get in a little exercise on you hike, this short section will get your heart pumping.



Trail Junction 4: The Towsley View Loop Trail

The Don Mullally Trail ends in a T-junction with the Towsley View Loop Trail. Turn left and continue for .25 miles to Towsley Canyon Road and the parking area.



End of Trail

Congratulation! You've completed the 2-mile Don Mullally Trail. For a longer, more invigorating hike, consider returning to Ed Davis Park and tackling the Towsley View Loop Trail around the perimeter of the canyon.